



## eyePower Ethernet Firmware Update

Version 1.2

14<sup>th</sup> August, 2013

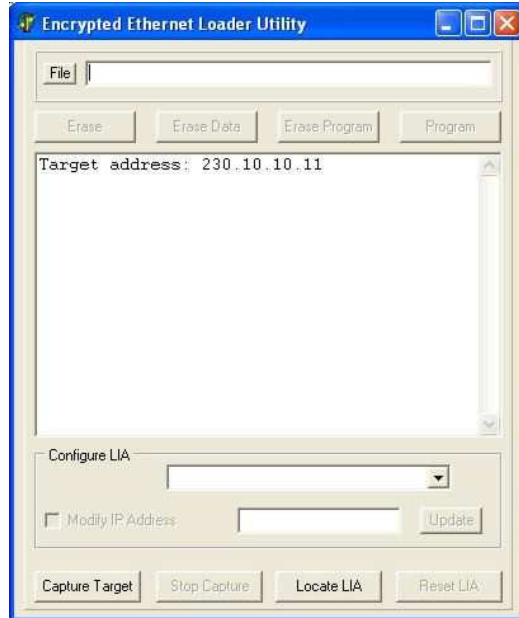
### **SAFETY NOTICE**

End users must be made aware that power outlets are remote controlled  
This unit is not certified for safety isolation of the electrical supply

70b Stafford Road, Croydon, Surrey, CR0 4NE  
t: +44 (0)20 8404 4050 f: +44 (0)20 8404 4080  
e: sales@bryant-unlimited.co.uk  
w: www.bryant-unlimited.co.uk  
VAT No.: GB 853 2474 22



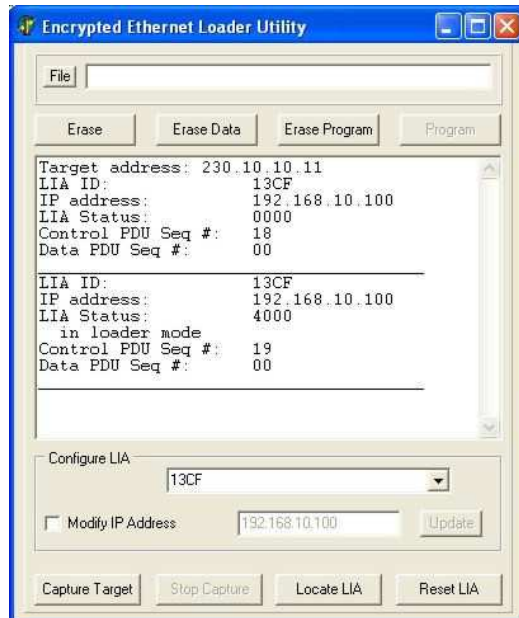
Run ENC\_Loader.exe, which is a third party bootloader program that updates eyePower's web interface.



Click [Capture Target].

On the front of the eyePower MDU, press the Unit button followed by the Reset Ethernet button.

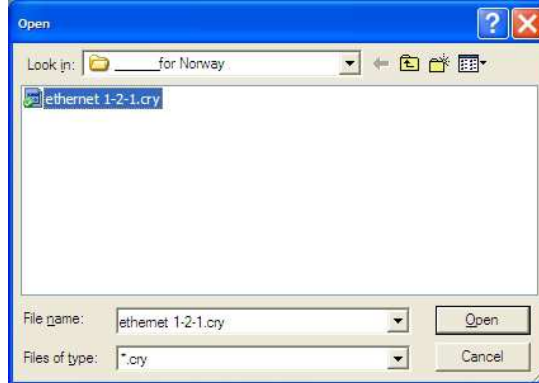
The Boot Loader Utility should capture the eyePower MDU Interface.



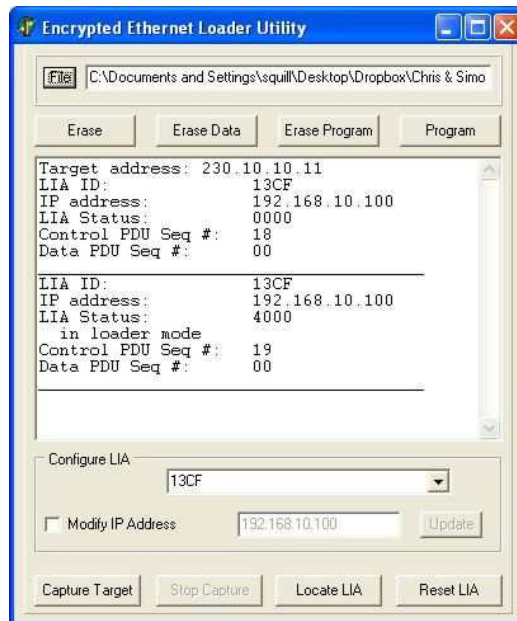
Note: If you do not successfully capture the eyePower MDU interface, you may need to add the ENC\_Loader.exe to your firewall exception list.



Click [File] to load the new Program File (.cry suffix)

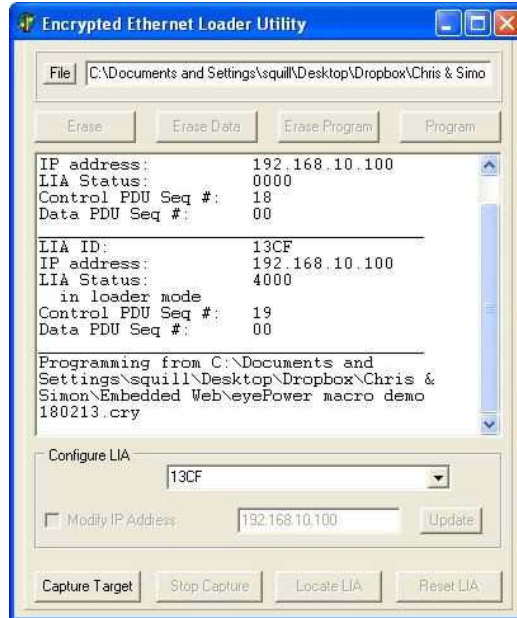


Select the file you want to upload and click [Open]

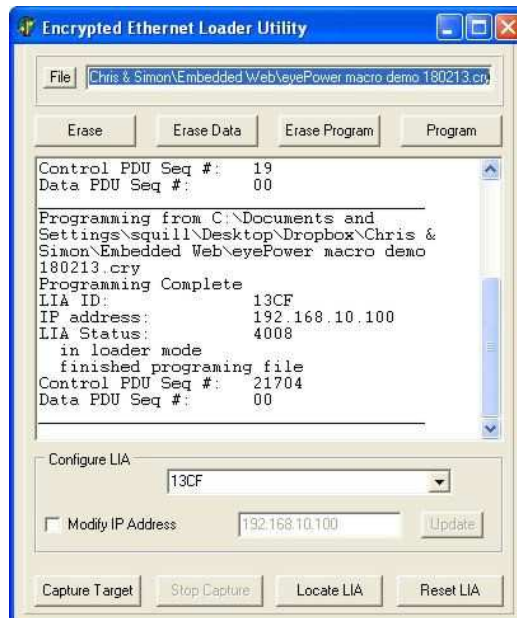




Click [Program] and wait approximately 30 seconds for the program to upload.



When you have successfully programmed the device you will see a message saying Programming Complete.



Close the Ethernet bootloader software and then, on the front of the MDU, press the Unit button followed by the Reset Ethernet button.

Previously entered Ethernet settings are maintained.