



## **eyePower MDU Firmware Update**

**Version 1.0**

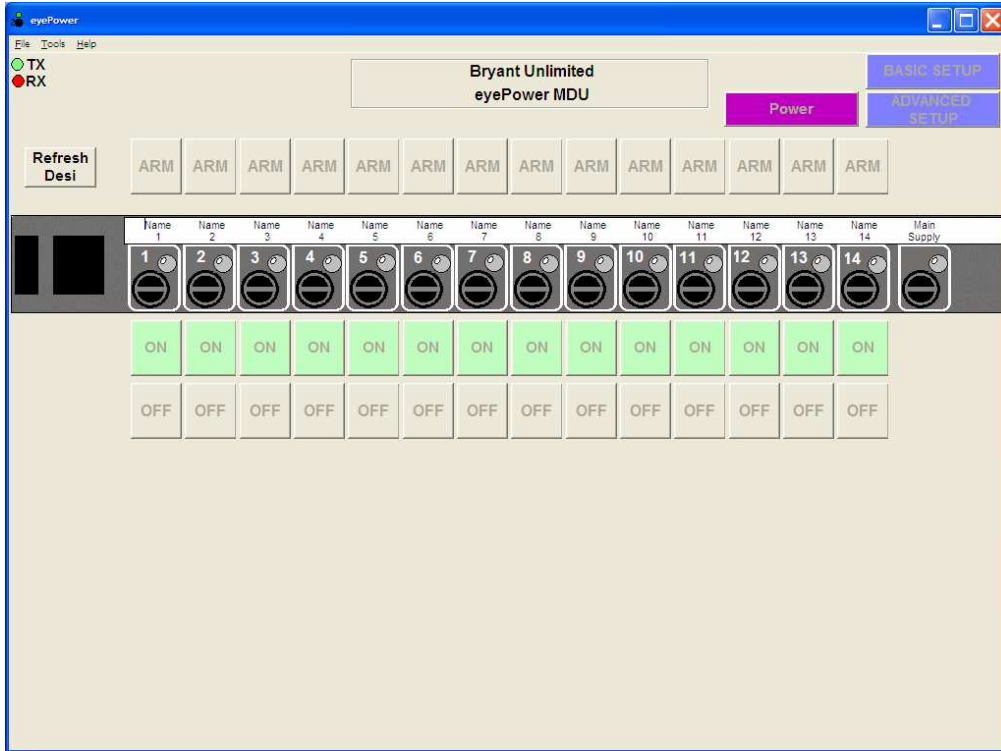
**14 August 2013**

70b Stafford Road, Croydon, Surrey, CR0 4NE  
t: +44 (0)20 8404 4050 f: +44 (0)20 8404 4080  
e: [sales@bryant-unlimited.co.uk](mailto:sales@bryant-unlimited.co.uk)  
w: [www.bryant-unlimited.co.uk](http://www.bryant-unlimited.co.uk)  
VAT No.: GB 853 2474 22



Connect your PC to the eyePower MDU serial port using a serial cable wired to the configuration shown in the eyePower Technical Manual.

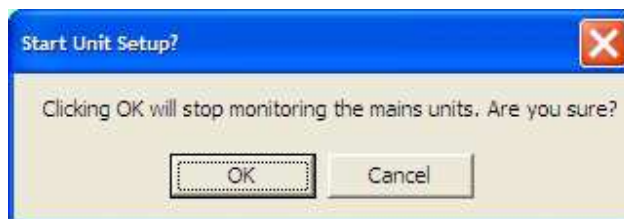
Power the MDU and run eyePower Windows™ Software version 1.91.1 or above.



Select the menu item, Tools > UnitSetup

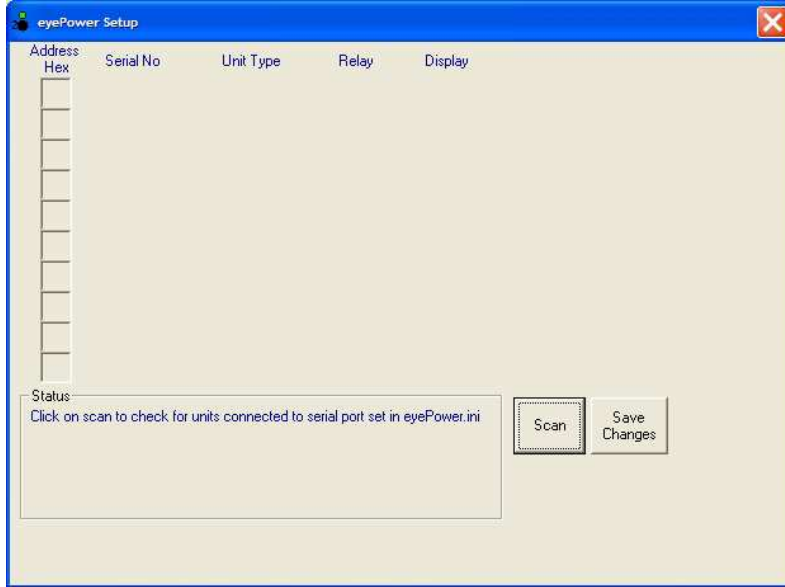


Confirm that you want to start unit setup by pressing [OK]

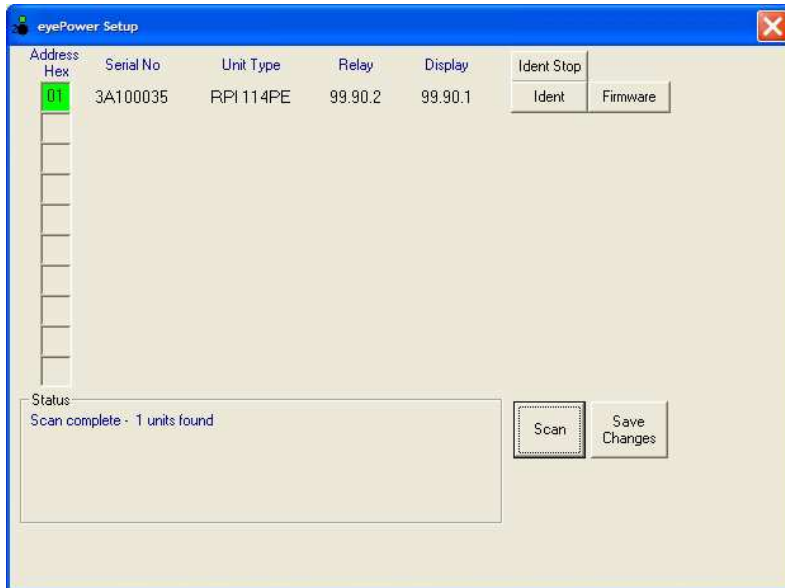




Click on the [Scan] button.

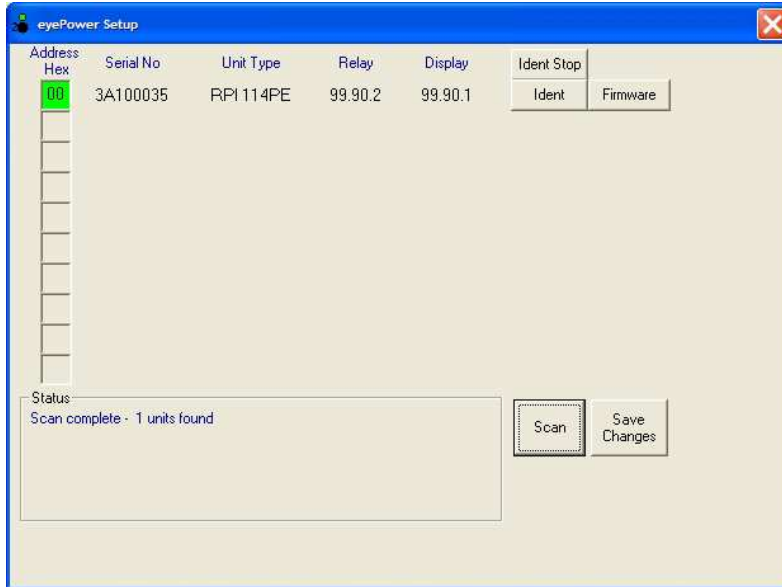


The connected unit will appear in the list. If the unit address is not '00' then select the number displayed, change it to '00' and press [Save Changes].

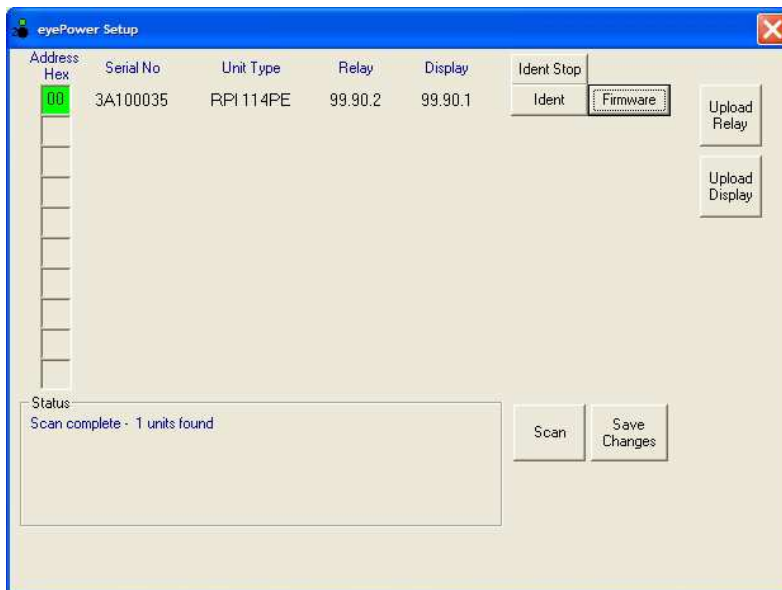




The software should rescan and display the new unit address as '00'



Click on [Firmware] and then [Upload Relay]

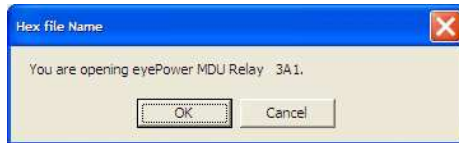




Select the relay hex file and click [Open].



The software will check that the file has not been corrupted and ask you to confirm that it is the correct hex file. Press [OK].

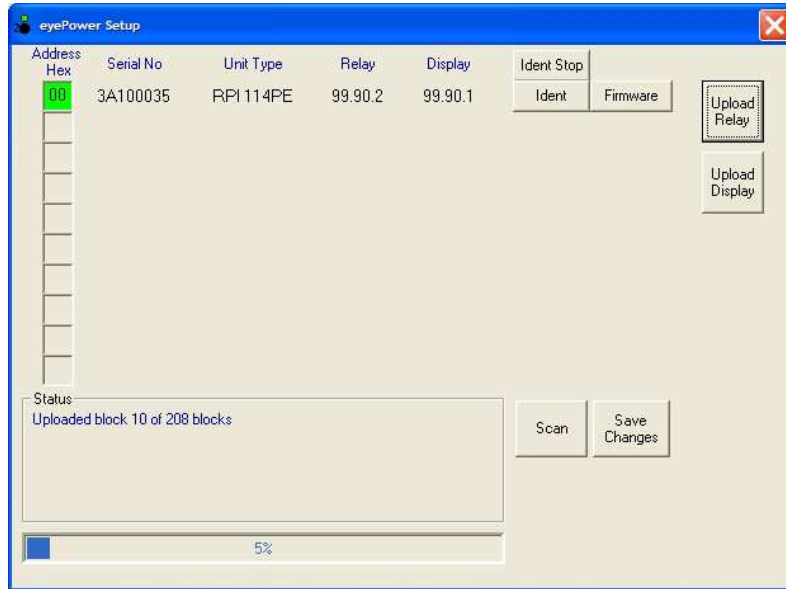


If you have selected a display hex file in error, the software will tell you and you will be returned to the Unit Setup screen.





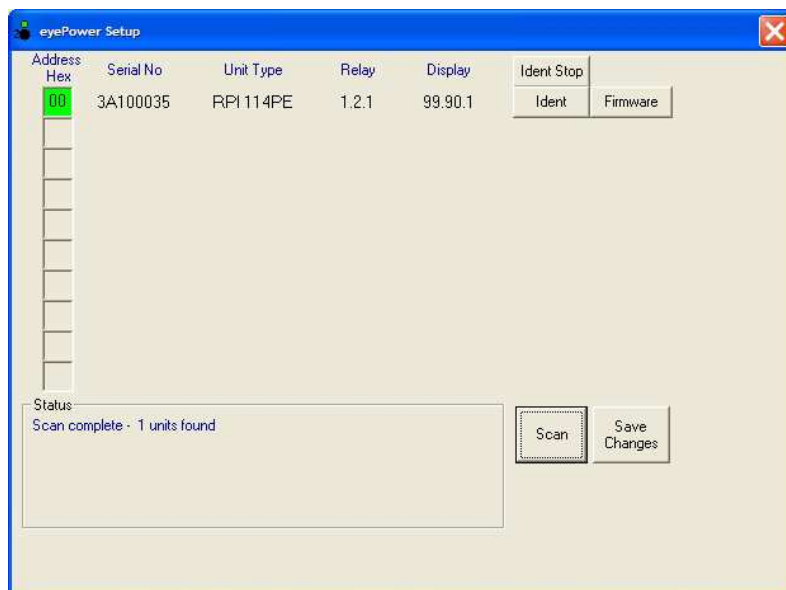
The software will start uploading the new firmware to the MDU and a progress bar at the bottom will tell you how far it has got. The Relay firmware will take about 2½ minutes to upload. While the Relay firmware is uploading, LEDs 1 & 2 will flash alternately to show that it is in bootloader mode.



Once the firmware is uploaded, you will see a conformation that the upload is complete. Click [OK] to continue.

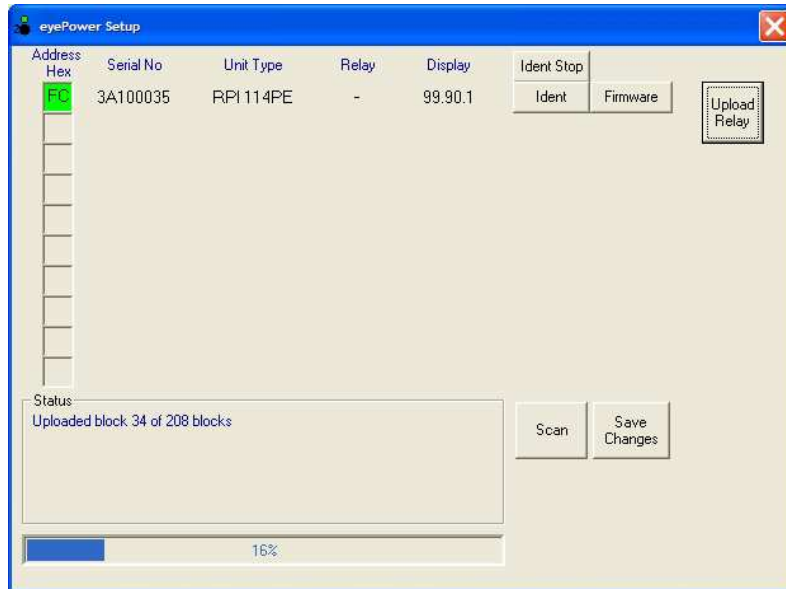


The software will rescan and the Relay column should show the version number of the file you uploaded.

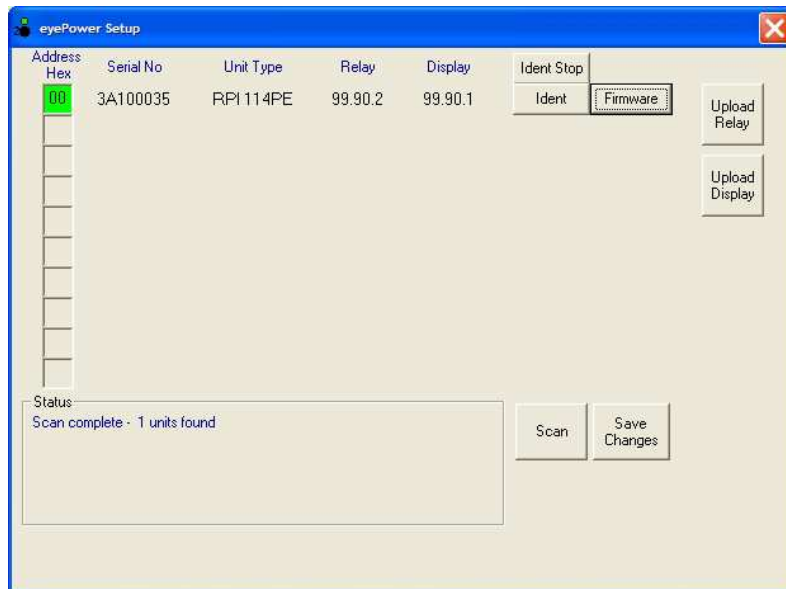




If the upload fails for any reason, you will receive an error message telling you what the problem is. Once you have clicked [OK], the software will rescan and the unit will appear with a different address. This is to show that the unit is still in bootload mode. It will not exit bootload mode until the firmware has been uploaded successfully. Please attempt the upload again.



Click on the [Firmware] button again and then the [Upload Display] Button.

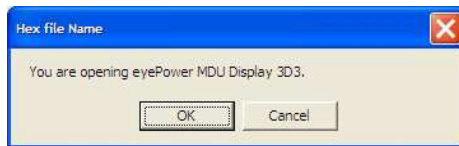




Select the Display hex file.



Confirm you have selected the correct hex file.



The software will start uploading the new firmware to the MDU and a progress bar at the bottom will tell you how far it has got. The Display firmware will take about 8½ minutes to upload. While the Display firmware is uploading, the OLED screen on the unit will turn red and the LEDs will flash to show that it is in bootloader mode.



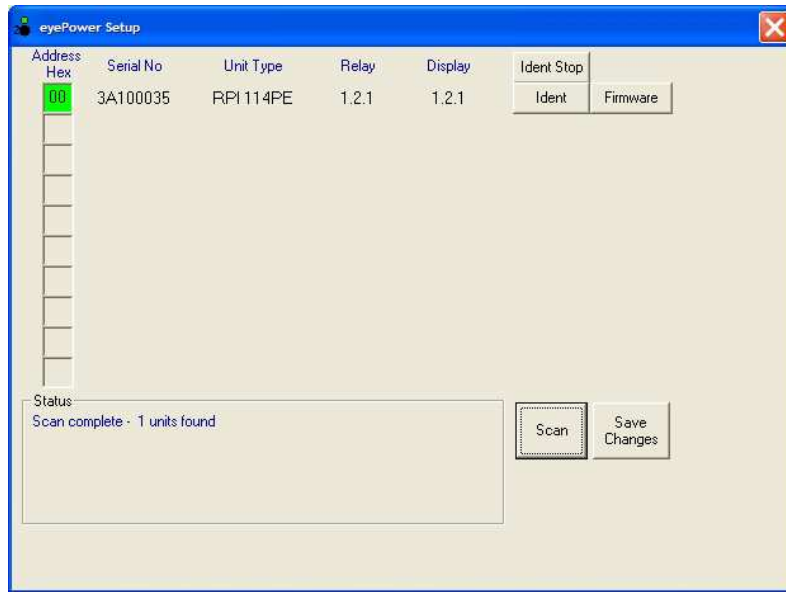




Once the Display firmware is uploaded, you will see a conformation that the upload is complete. Click [OK] to continue.



The software will rescan and the Display column should show the version number of the file you uploaded.



Close the Unit Setup form to return to the main eyePower Software screen. The screen should now update to show the status of the MDU.

Because the software might not have connected to the MDU when you first ran it, it might update the names on the designation strip incorrectly. Before typing them in again, click on the [Refresh Desi] button to download the names again.

Proceed to document eyePower Ethernet Firmware Update V1.2.doc.