



eyePower Limited

John de Mierre House, 20 Bridge Road,
Haywards Heath, RH16 1UA, UK

eyePower Ethernet Firmware Update

Version 1.4

4th April, 2021

Important Note:

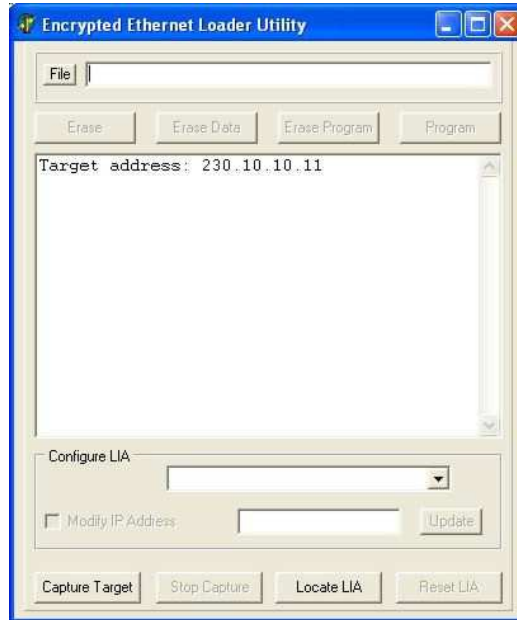
Remember that the default IP address of the Ethernet Bootloader is 192.168.10.100,
your laptop needs to be set to an IP address on the same subnet.

SAFETY NOTICE

**End users must be made aware that power outlets are remote controlled
This unit is not certified for safety isolation of the electrical supply**



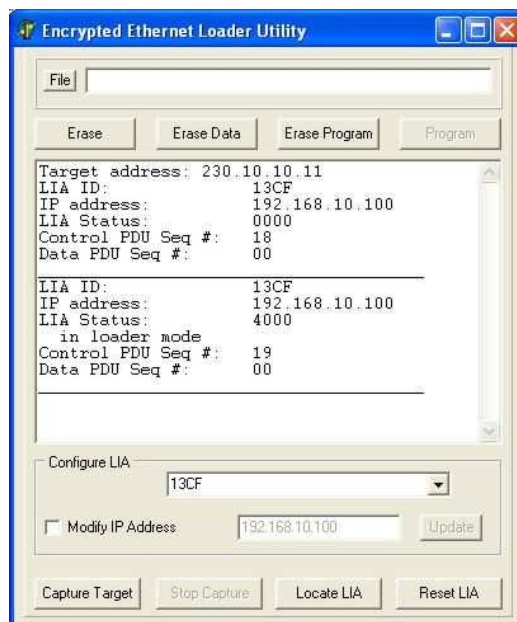
Run ENC_Loader.exe, which is a third party bootloader program that updates eyePower's web interface.



Click [Capture Target].

On the front of the eyePower PDU, press the Unit button followed by the Reset Ethernet button.

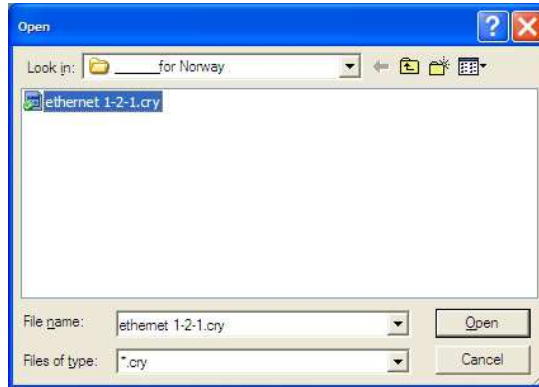
The Boot Loader Utility should capture the eyePower PDU Interface.



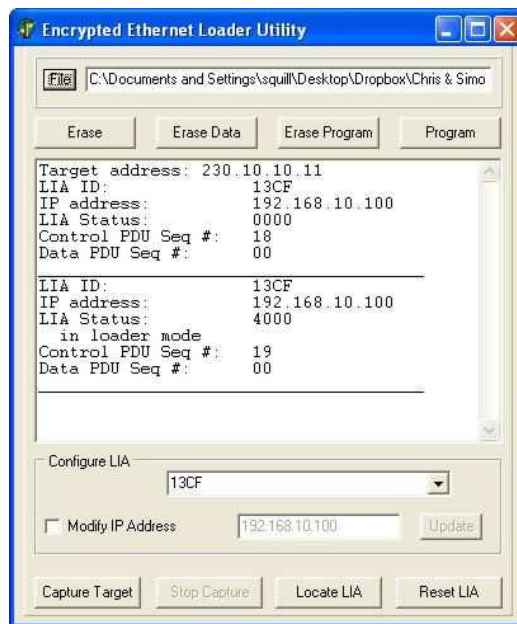
Note: If you do not successfully capture the eyePower PDU interface, you may need to add the ENC_Loader.exe to your firewall exception list.



Click [File] to load the new Program File (.cry suffix)

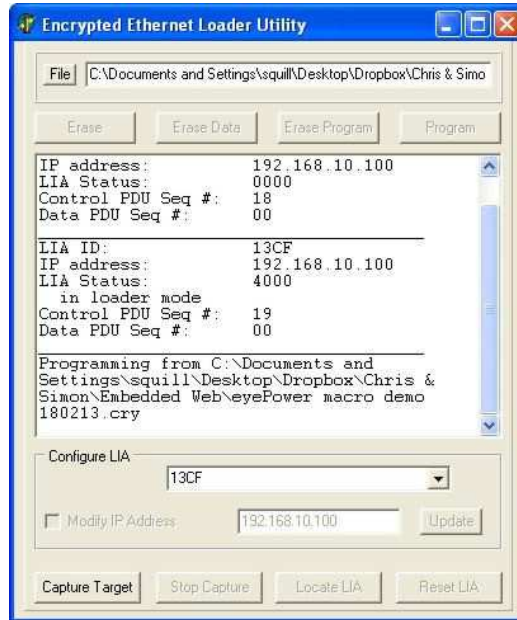


Select the file you want to upload and click [Open]

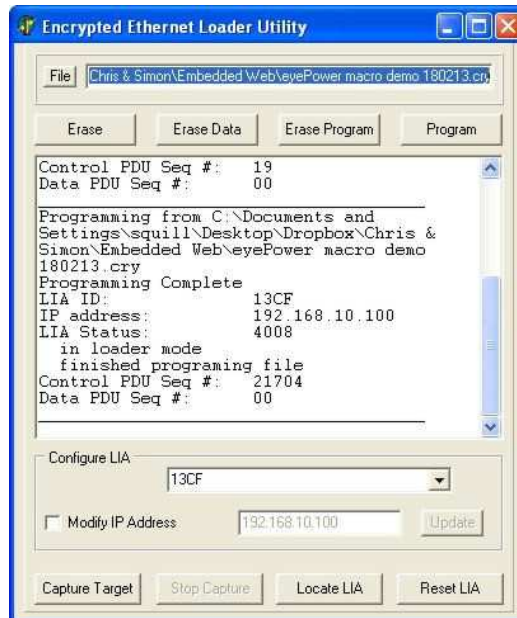




Click [Program] and wait approximately 30 seconds for the program to upload.



When you have successfully programmed the device, you will see a message saying Programming Complete.



Close the Ethernet bootloader software and then, on the front of the PDU, press the Unit button followed by the Reset Ethernet button.

Previously entered Ethernet settings are maintained.